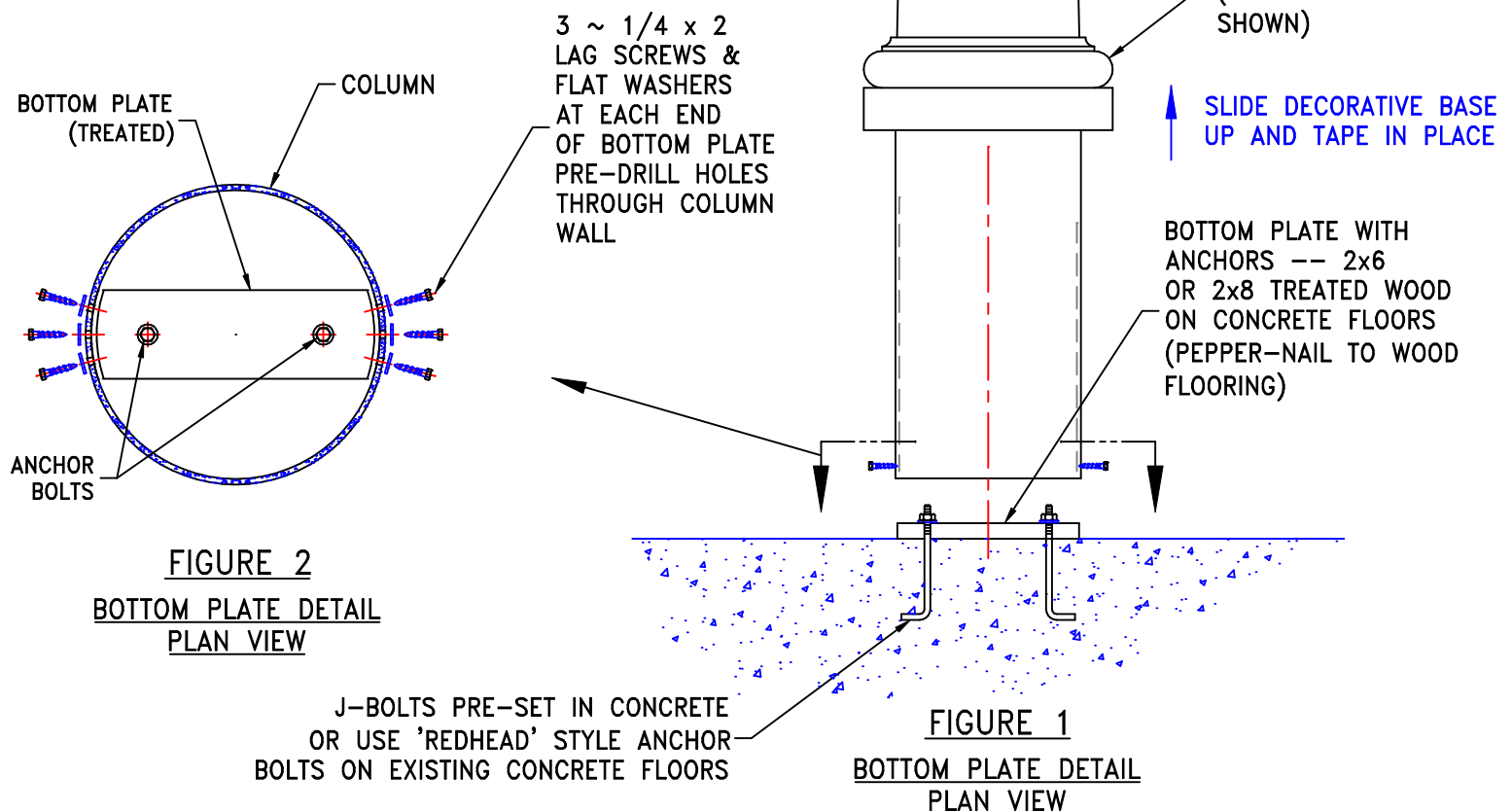


COLUMN 'SURFACE MOUNT' INSTALLATION INSTRUCTIONS

INSTALLATION STEPS:

1. ESTABLISH PROPER COLUMN CENTERLINE LOCATION USING A PLUMB BOB OR SIMILAR DEVICE (IF REQUIRED)
2. MEASURE THE OPENING HEIGHT AND TRIM COLUMN TO LENGTH IF REQUIRED. TRIM COLUMN SHAFT ON BOTTOM END ONLY USING A FINE-TOOTHED HANDSAW. FINISH WITH SANDPAPER OR RASP IN ORDER TO INSURE PROPER FIT TO SURFACE FOR AN EVEN LOAD DISTRIBUTION
3. PRE-FIT CAPS AND BASES WITH COLUMN LYING ON ITS SIDE. USE AN ELECTRIC DRILL & DRUM SANDER ON INSIDE OF CAP OR BASE TO MAKE IT FIT PROPERLY
4. USE A TREATED 2x6 OR 2x8 FOR BOTTOM PLATE. TRIM BOTTOM PLATE ENDS TO FIT COLUMN INSIDE DIAMETER CONTOUR, SEE FIGURES 1 & 2, LAYOUT AND DRILL ANCHOR BOLT HOLES IN BOTTOM PLATE AND USE FOR TEMPLATE TO SET THE J-BOLTS IN PROPER LOCATION (IF THE FLOOR IS ALREADY POURED, USE 'REDHEAD' OR SIMILAR ANCHORS), POUR CONCRETE AND ALLOW TO CURE
5. SET THE BOTTOM PLATE INTO PLACE
6. SLIDE DECORATIVE BASE ONTO COLUMN AND DUCT TAPE INTO PLACE A FEW FEET ABOVE THE COLUMN BOTTOM, ALLOW PLENTY OF WORKING SPACE (FIG. 1)
7. RAISE THE COLUMN UP AND SET INTO PLACE OVER THE BOTTOM PLATE, DRILL PILOT HOLES THRU COLUMN WALL INTO ENDS OF THE BOTTOM PLATE AND FASTEN INTO PLACE USING 1/4 x 2 LAG SCREWS AND FLAT WASHERS (FIG. 2)

(STEPS CONTINUED ON PAGE 2)



COLUMN 'SURFACE MOUNT' INSTALLATION INSTRUCTIONS

INSTALLATION STEPS (CONT. FROM PG. 1):

8. LOWER THE DECORATIVE BASE INTO PLACE (FIG. 3) AND SQUARE UP TO WALL OR OTHER BUILDING FEATURE (FIG. 4). SCRIBE/TRACE A LINE AROUND THE PLINTH (SQUARE PORTION OF BASE) AND THEN OFFSET THAT LINE, TOWARDS THE INSIDE, A DISTANCE EQUAL TO THE WALL THICKNESS OF THE PLINTH. DRILL HOLES IN THE FLOOR ON OPPOSITE CORNERS OF THE OFFSET SQUARE WHICH ARE TANGENT TO THE OFFSET LINES (SEE FIG. 5) FOR THE PLACEMENT OF ANTI-ROTATION DOWEL PINS. PINS CAN BE A PIECE OF 1/2" GALVANIZED ALL-THREAD DRIVEN INTO THE HOLE AND THEN CUT TO LENGTH WITH HACKSAW (FIG. 6)

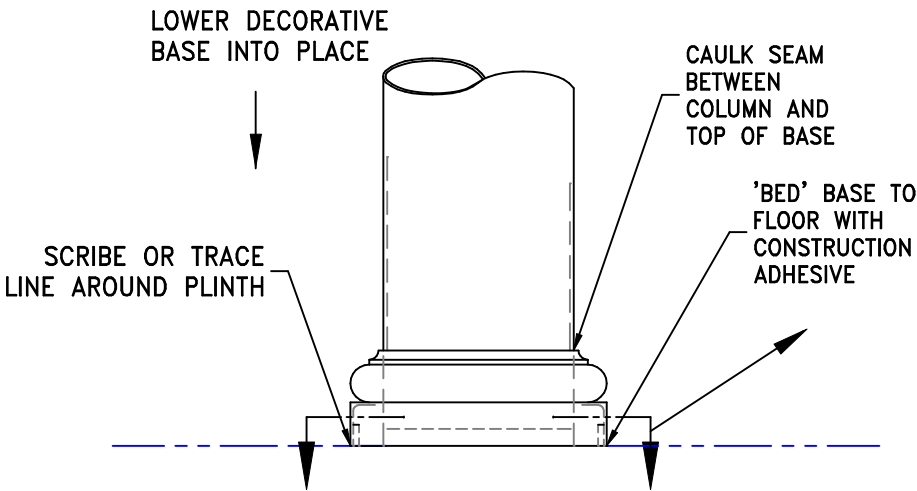


FIGURE 3
BASE INSTALLATION DETAIL
ELEVATION VIEW

9. RUN A BEAD OF ADHESIVE AROUND THE OUTLINE OF THE BASE AND LOWER BASE INTO FINAL POSITION (FIGURE 3). REMOVE EXCESS ADHESIVE FROM FLOOR. CAULK THE SEAM BETWEEN THE TOP OF THE BASE AND THE COLUMN WALL. FOR MARBLED COLUMNS BE SURE TO MASK THE AREA BEFORE APPLYING CAULK TO SEAM

(STEPS CONTINUED ON PAGE 3)

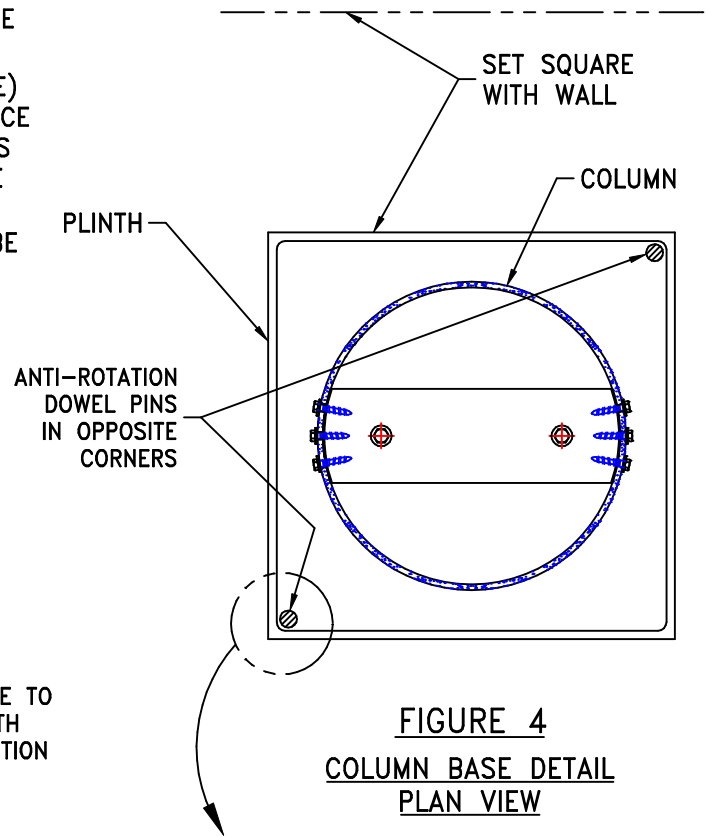


FIGURE 4
COLUMN BASE DETAIL
PLAN VIEW

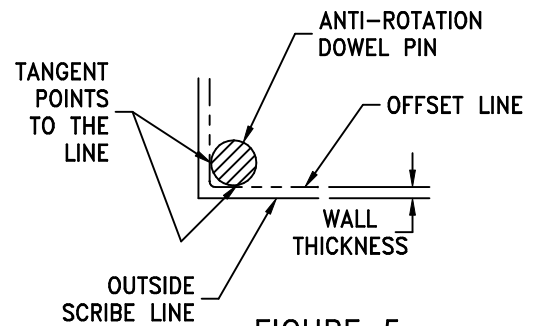


FIGURE 5
CORNER DETAIL

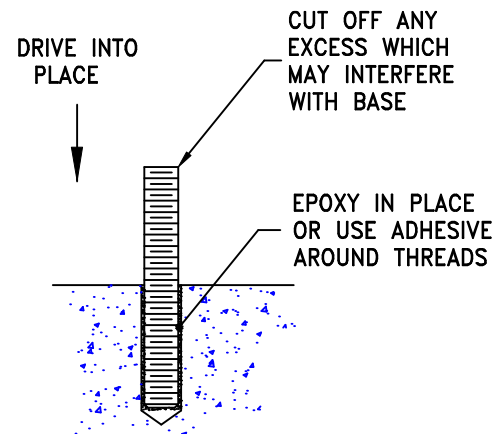


FIGURE 6
DOWEL PIN DETAIL

COLUMN 'SURFACE MOUNT' INSTALLATION INSTRUCTIONS

INSTALLATION STEPS (CONT. FROM PAGE 2):

10. INSTALL PRE-FIT CAP AND LOWER INTO TEMPORARY RESTING PLACE ON NECK MOLDING (FIGS. 7 & 8)

11. MEASURE THE WIDTH OF BEAM WHICH WILL REST ON TOP OF COLUMN AND FABRICATE A "STACKED PLATE" TOP PLATE OR USE THE SCRAP END OF THE BEAM (GLU-LAM OR OTHER). TRIM TO LENGTH AND CUT ENDS TO MATCH INSIDE CONTOUR AND DIAMETER OF COLUMN.

NOTE: IF COLUMN INSTALLATION IS ON THE OUTSIDE OF OF THE HOME/BUILDING, THEN YOU WILL NEED TO INSTALL TIE PLATES IN ORDER TO MEET UPLIFT REQUIREMENTS. NAIL TIE PLATES TO THE SIDES OF TOP PLATE (FIG. 8) BEFORE POSITIONING THE ASSEMBLY INTO THE COLUMN. INSTALL ASSEMBLY FLUSH WITH TOP EDGE, DRILL AND LAG INTO TOP PLATE ENDS (FIG. 9). LOWER BEAM INTO PLACE AND MAKE TIE PLATE CONNECTIONS

12. SLIDE CAP UP NECK INTO PLACE AND SQUARE IT WITH BASE BELOW. FINAL EVELATION OF CAP CAN VARY, ACCORDING TO PREFERENCE OF OWNER. SET UP CAP CONNECTION FOR "BUTT FIT" OR "LAYOVER FIT" AND SHIM/OFFSET AS REQUIRED FOR SHEETROCK, ETC.

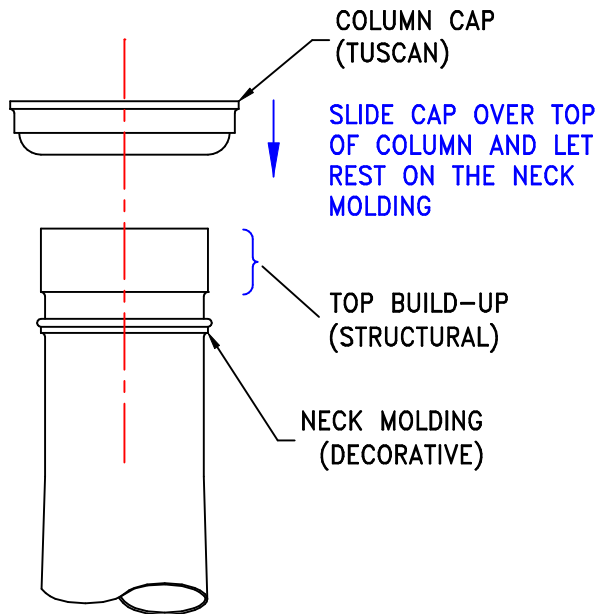


FIGURE 7
COLUMN TOP
ELEVATION VIEW

(STEPS CONTINUED ON PAGE 4)

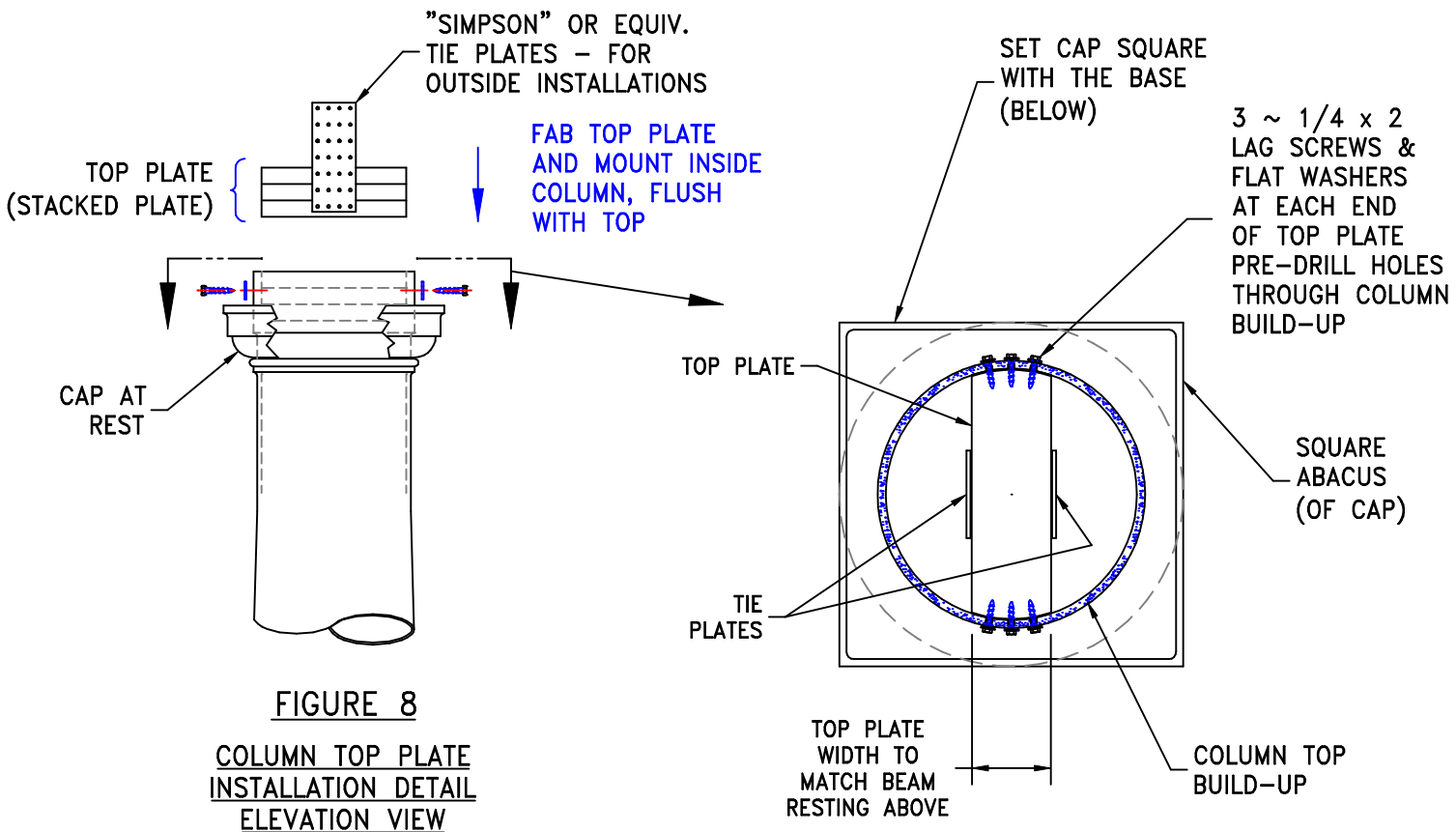


FIGURE 8
COLUMN TOP PLATE
INSTALLATION DETAIL
ELEVATION VIEW

FIGURE 9
TOP PLATE DETAIL
PLAN VIEW (ROTATED)

COLUMN 'SURFACE MOUNT' INSTALLATION INSTRUCTIONS

INSTALLATION STEPS (CONT. FROM PAGE 3):

13. AFTER SQUARING, SCREW CAP INTO PLACE FROM ABOVE (PREFERRED INSTALLATION METHOD) USING NON-CORROSIVE SCREWS. WHERE TOP OF COLUMN IS INACCESSIBLE, DRILL AND COUNTERSINK FOR THE SCREW HEADS, FILL HOLES AFTERWARDS AND CAULK THE SEAM BETWEEN CAP AND COLUMN PRIOR TO PAINTING (FIG.10). USE SANDED, COLORED CAULK FOR TOUCH-UP ON MARBLED COLUMNS

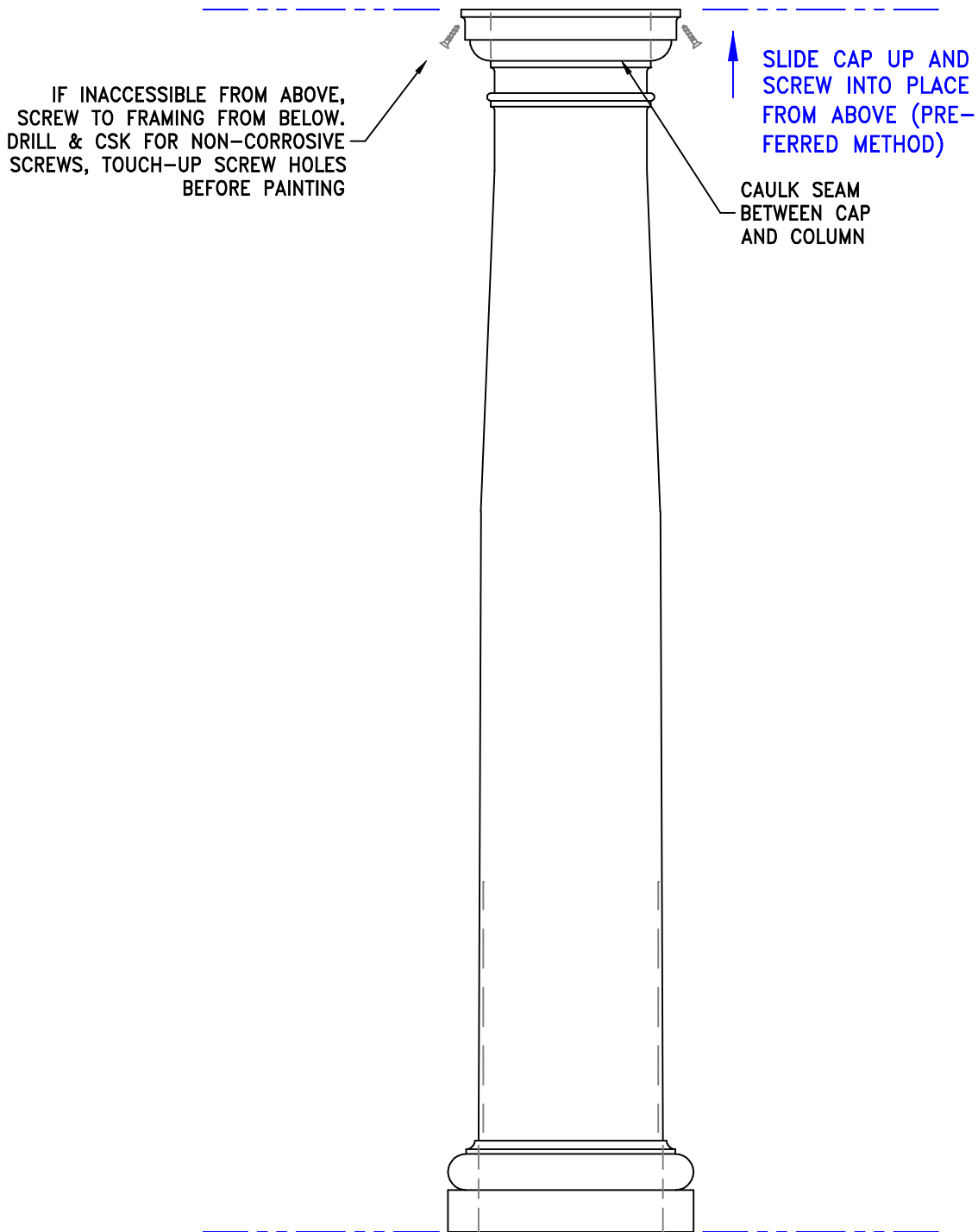


FIGURE 10
FINISHED COLUMN DETAIL
ELEVATION