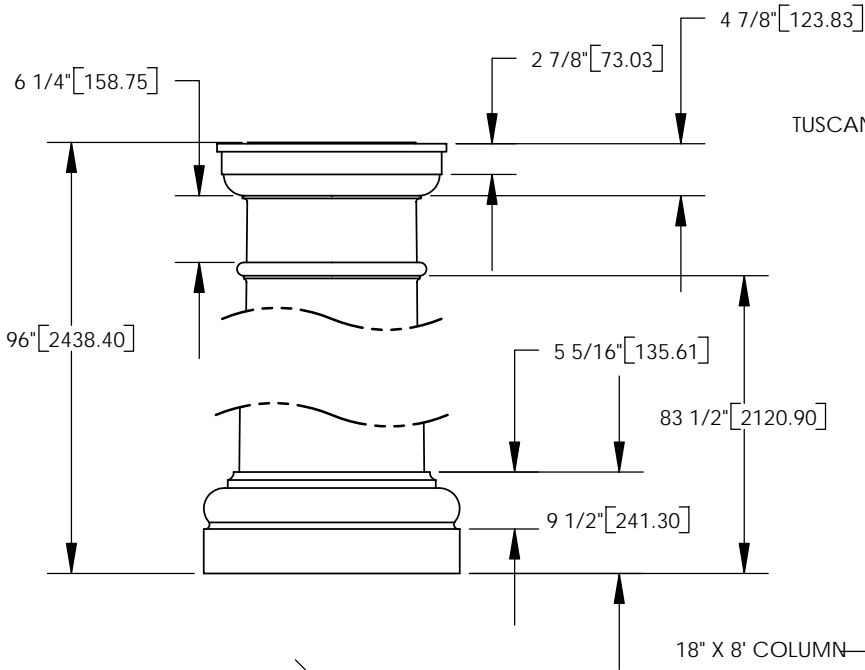
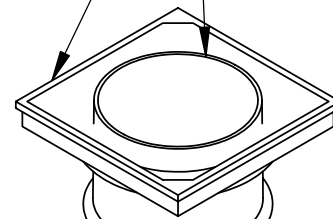


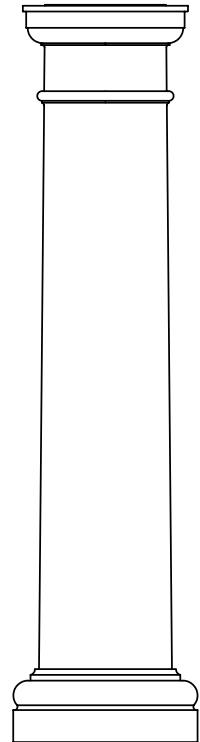
- NOTES:
1. DIMENSIONS WITHIN THE PARENTHESES ARE METRIC UNITS (millimeters) or (Kg=Kilograms)
  2. MATERIAL: FIBERGLASS REINFORCED POLYMER (FRP)
  3. WEIGHT. COLUMN: 200 Lb. (90.7 Kg)  
CAP: 34 Lb. ( 34.0 Kg)  
BASE: 53 Lb. ( 24.0 Kg)
  4. MATERIAL THICKNESS. COLUMN: 3/8" (9.5)
  5. INSIDE DIAMETER AT TOP OF COLUMN: 15" (381.0)
  6. OUTSIDE DIAMETER AT TOP OF COLUMN: 15 3/4" (400.0)
  7. INSIDE DIAMETER AT BOTTOM OF COLUMN: 16 3/4" (425.5)
  8. OUTSIDE DIAMETER AT BOTTOM OF COLUMN: 17 1/2" (444.5)



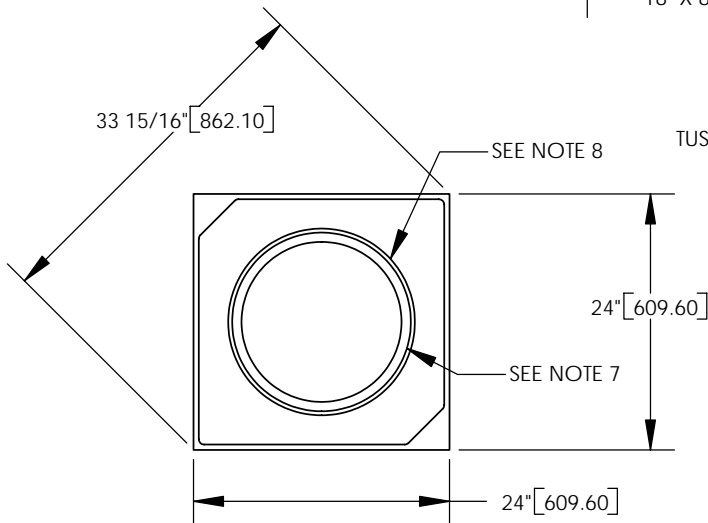
TUSCAN CAP  
COLUMN PROJECTS 1/8" (3.18) ABOVE STANDARD CAPITAL.



18" X 8' COLUMN



ARCHITECTURAL VIEW  
SCALE 1/25



TUSCAN BASE

TUSCAN BASE

		DIMENSIONS ARE IN INCHES (mm)		NAME	DATE
		TOLERANCES: FRACTIONAL ± 1/8" ANGULAR: MACH ± BEND ± TWO PLACE DECIMAL ± THREE PLACE DECIMAL ±		SOF	
		MATERIAL --		CHECKED	
		FINISH --		ENG APPR.	
NEXT ASSY	USED ON			MFG APPR.	
APPLICATION		DO NOT SCALE DRAWING		Q.A.	
				COMMENTS:	

© COPYRIGHT  
First Class Building Products, Inc. 2005

18" X 8' TUSCAN COLUMN  
ASSEMBLY

Tel: (888) 514-8141  
Fax: (770) 514-0731  
E-Mail: firstclassbp@mindspring.com

SIZE	DWG. NO.	REV.
A		01
SCALE: 1/18	WEIGHT:	SHEET 1 OF 1