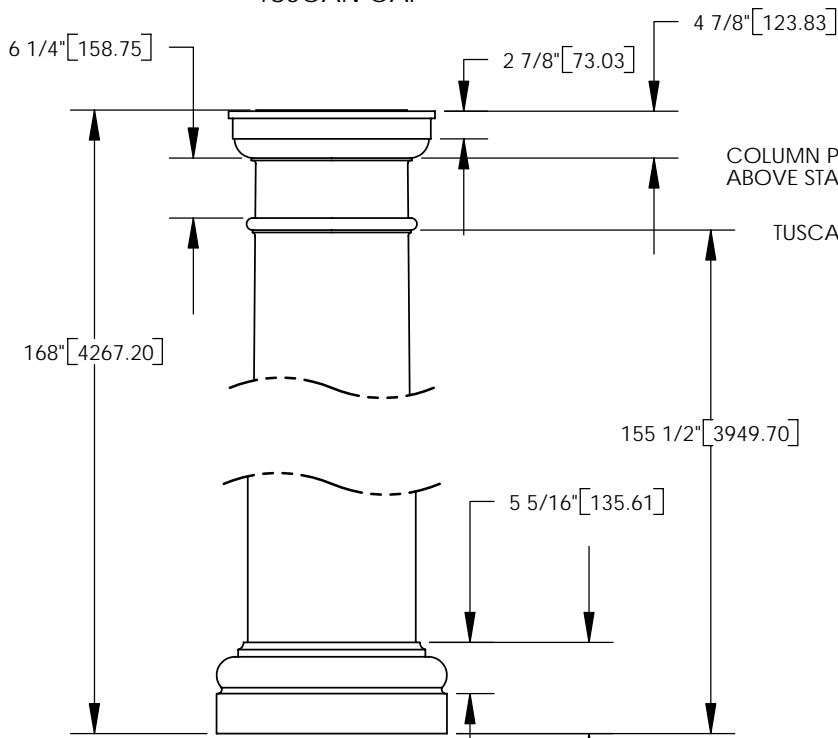
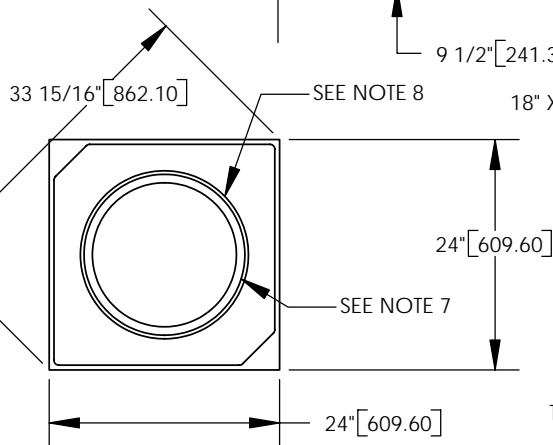


TUSCAN CAP

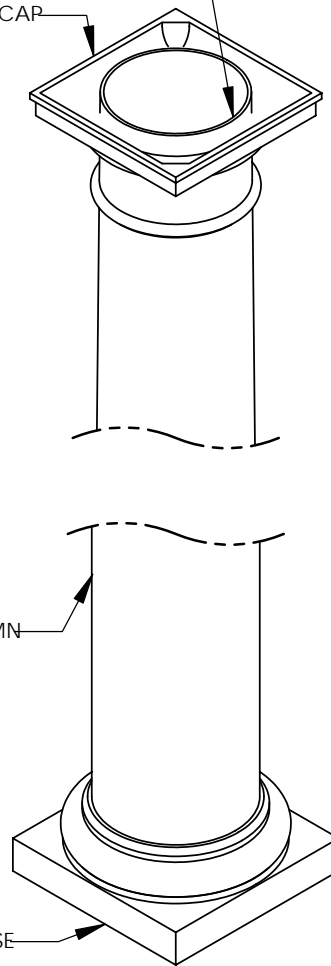


COLUMN PROJECTS 1/8" (3.18) ABOVE STANDARD CAPITAL.

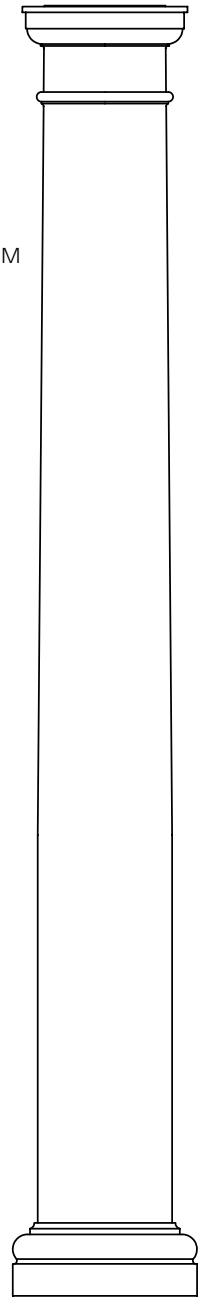
TUSCAN CAP



TUSCAN BASE



TUSCAN BASE



ARCHITECTURAL VIEW
SCALE 1/25

NOTES:

1. DIMENSIONS WITHIN THE PARENTHESES ARE METRIC UNITS (millimeters) or (Kg=Kilograms)
2. MATERIAL: FIBERGLASS REINFORCED POLYMER (FRP)
3. WEIGHT. COLUMN: 350 Lb. (158.8 Kg)
CAP: 34 Lb. (15.4 Kg)
BASE: 53 Lb. (24.0 Kg)
4. MATERIAL THICKNESS. COLUMN: 3/8" (9.5)
5. INSIDE DIAMETER AT TOP OF COLUMN: 15" (381.0)
6. OUTSIDE DIAMETER AT TOP OF COLUMN: 15 3/4" (400.0)
7. INSIDE DIAMETER AT BOTTOM OF COLUMN: 16 3/4" (425.5)
8. OUTSIDE DIAMETER AT BOTTOM OF COLUMN: 17 1/2" (444.5)
9. TAPER STARTS 60" (1524.0) FROM BOTTOM OF COLUMN

DIMENSIONS ARE IN INCHES (mm)
TOLERANCES:
FRACTIONAL ± 1/8"
ANGULAR: MACH ±
BEND ±
TWO PLACE DECIMAL ±
THREE PLACE DECIMAL ±

MATERIAL --

FINISH --

		NAME	DATE
		SOF	
		CHECKED	
		ENG APPR.	
		MFG APPR.	
		Q.A.	
		COMMENTS:	
NEXT ASSY	USED ON		
APPLICATION		DO NOT SCALE DRAWING	

© COPYRIGHT
First Class Building Products, Inc. 2005

18" X 14' TUSCAN COLUMN ASSEMBLY

SIZE	DWG. NO.	REV.
A		01
SCALE: 1/20	WEIGHT:	SHEET 1 OF 1