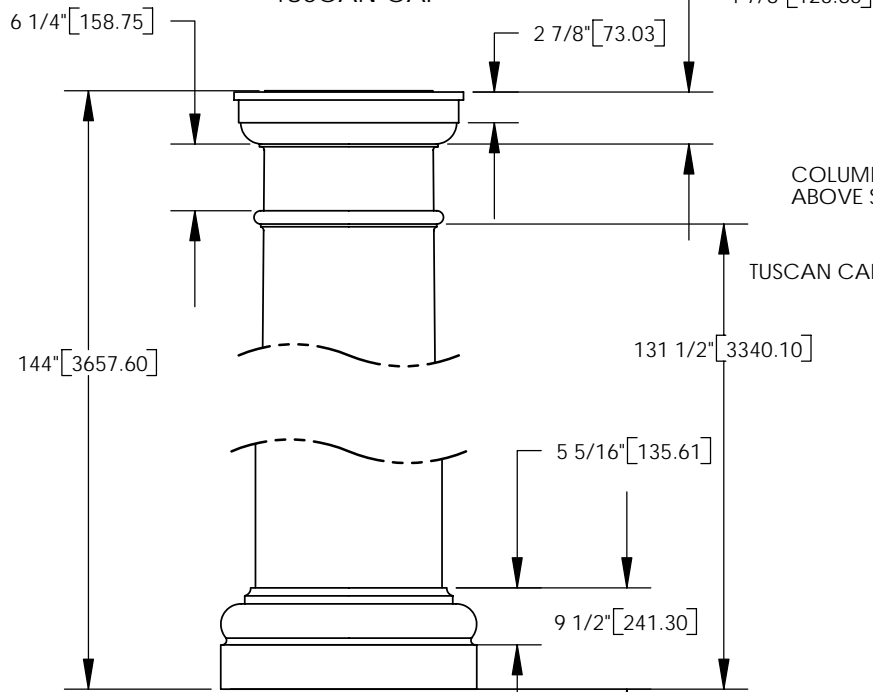
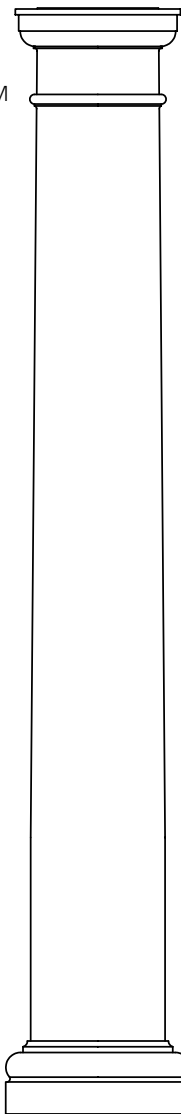
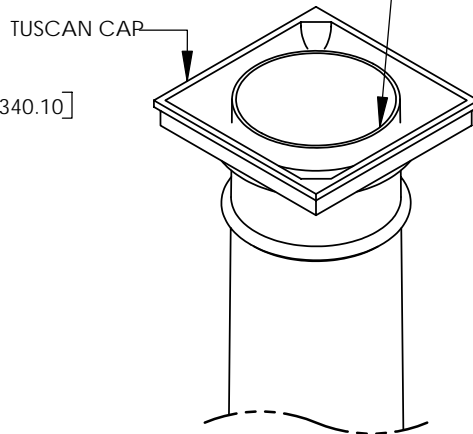


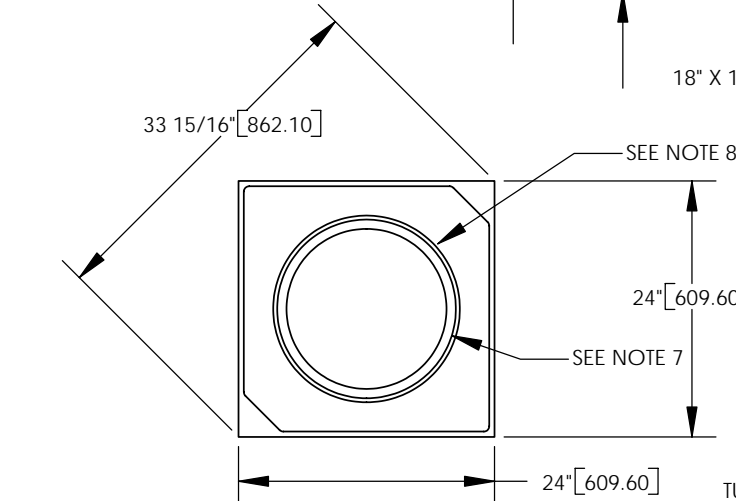
- NOTES:
1. DIMENSIONS WITHIN THE PARENTHESES ARE METRIC UNITS (millimeters) or (Kg=Kilograms)
 2. MATERIAL: FIBERGLASS REINFORCED POLYMER (FRP)
 3. WEIGHT. COLUMN: 325 Lb. (147.4 Kg)
CAP: 34 Lb. (15.4 Kg)
BASE: 53 Lb. (24.0 Kg)
 4. MATERIAL THICKNESS. COLUMN: 3/8" (9.5)
 5. INSIDE DIAMETER AT TOP OF COLUMN: 15" (381.0)
 6. OUTSIDE DIAMETER AT TOP OF COLUMN: 15 3/4" (400.0)
 7. INSIDE DIAMETER AT BOTTOM OF COLUMN: 16 3/4" (425.5)
 8. OUTSIDE DIAMETER AT BOTTOM OF COLUMN: 17 1/2" (444.5)
 9. TAPER STARTS 36" (914.4) FROM BOTTOM OF COLUMN



COLUMN PROJECTS 1/8" (3.18) ABOVE STANDARD CAPITAL.



ARCHITECTURAL VIEW SCALE 1/25



TUSCAN BASE

18" X 12' COLUMN

TUSCAN BASE

		DIMENSIONS ARE IN INCHES (mm)		NAME	DATE
		TOLERANCES:		DRAWN	SOF
		FRACTIONAL ± 1/8"		CHECKED	
		ANGULAR: MACH ±		ENG APPR.	
		BEND ±		MFG APPR.	
		TWO PLACE DECIMAL ±		Q.A.	
		THREE PLACE DECIMAL ±		COMMENTS:	
		MATERIAL --			
NEXT ASSY	USED ON	FINISH --			
APPLICATION		DO NOT SCALE DRAWING			

© COPYRIGHT First Class Building Products, Inc. 2005

18" X 12' TUSCAN COLUMN ASSEMBLY

SIZE	DWG. NO.	REV.
A		01
SCALE: 1/18	WEIGHT:	SHEET 1 OF 1