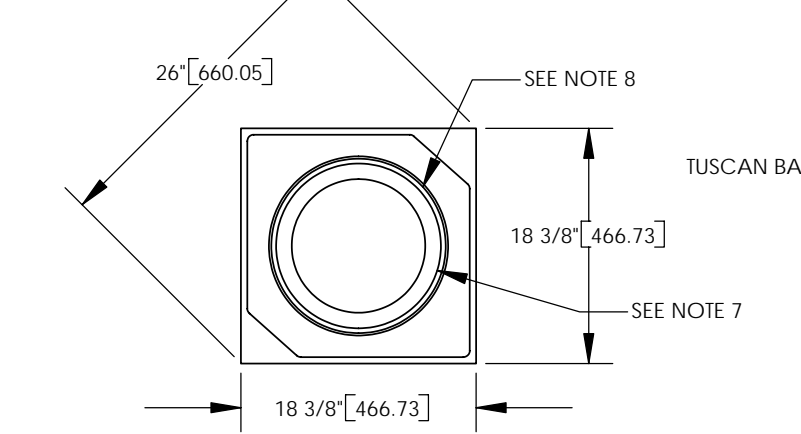
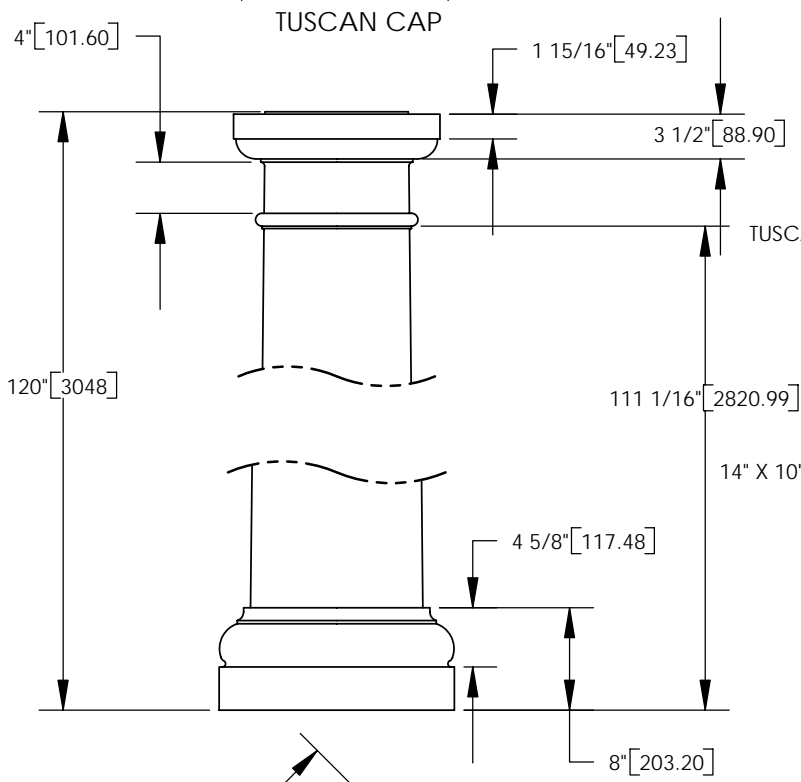
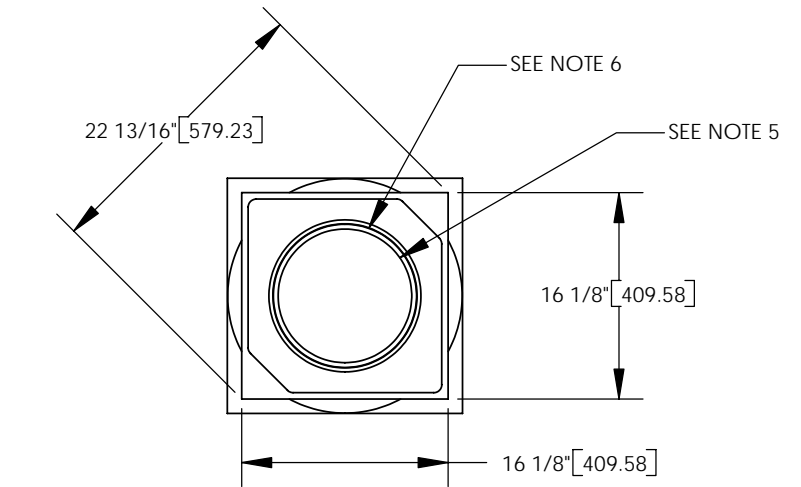


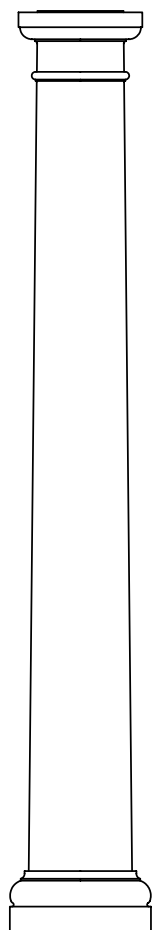
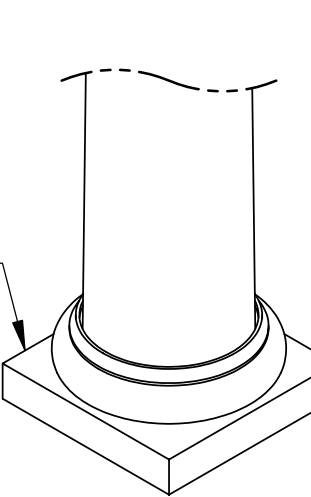
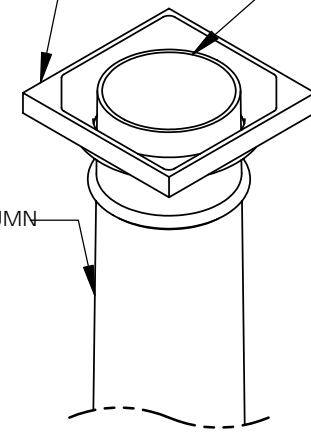
NOTES:

1. DIMENSIONS WITHIN THE PARENTHESES ARE METRIC UNITS (millimeters) or (Kg=Kilograms)
2. MATERIAL: FIBERGLASS REINFORCED POLYMER (FRP)
3. WEIGHT. COLUMN: 200 Lb. (90.7 Kg)  
CAP: 20 Lb. (9.1 Kg)  
BASE: 29 Lb. (13.2 Kg.)
4. MATERIAL THICKNESS. COLUMN: 3/8" (9.5)
5. INSIDE DIAMETER AT TOP OF COLUMN: 11 5/8" (295.3)
6. OUTSIDE DIAMETER AT TOP OF COLUMN: 11 7/8" (301.6)
7. INSIDE DIAMETER AT BOTTOM OF COLUMN: 13 3/8" (339.7)
8. OUTSIDE DIAMETER AT BOTTOM OF COLUMN: 13 5/8" (346.1)
9. TAPER STARTS 6" (152.4) FROM BOTTOM OF COLUMN.



COLUMN PROJECTS 1/8" (3.18) ABOVE STANDARD CAPITAL.

TUSCAN CAP



ARCHITECTURAL VIEW SCALE 1/25

TUSCAN BASE

		DIMENSIONS ARE IN INCHES (mm)		NAME	DATE
		TOLERANCES: FRACTIONAL ± 1/8" ANGULAR: MACH ± BEND ± TWO PLACE DECIMAL ± THREE PLACE DECIMAL ±		DRAWN	SOF
		MATERIAL --		CHECKED	
		FINISH --		ENG APPR.	
NEXT ASSY	USED ON			MFG APPR.	
APPLICATION		DO NOT SCALE DRAWING		Q.A.	
				COMMENTS:	

© COPYRIGHT First Class Building Products, Inc. 2005

14" X 10' TUSCAN COLUMN ASSEMBLY

Tel: (888) 514-8141  
Fax: (770) 514-0731  
E-Mail: firstclassbp@mindspring.com

SIZE	DWG. NO.	REV.
A		01
SCALE: 1/15	WEIGHT:	SHEET 1 OF 1