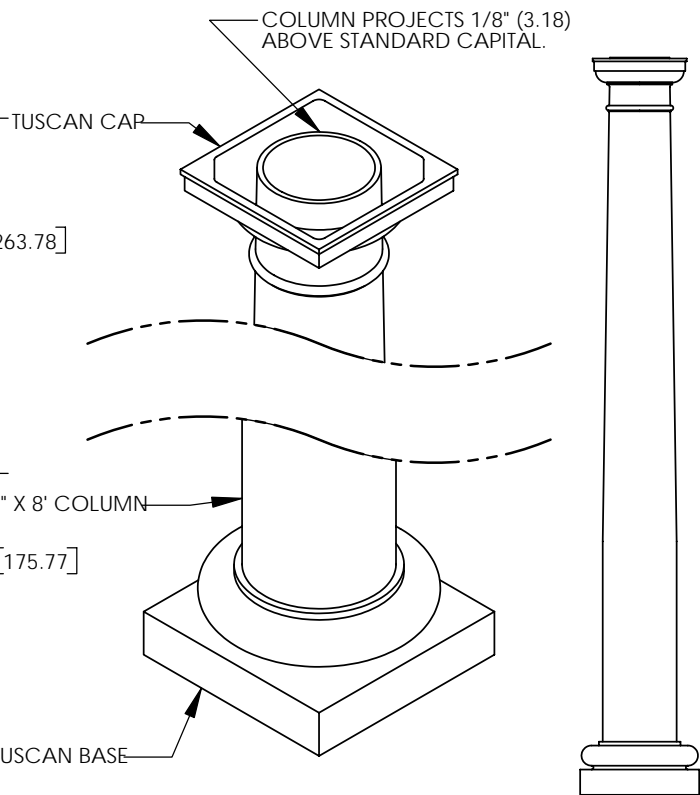
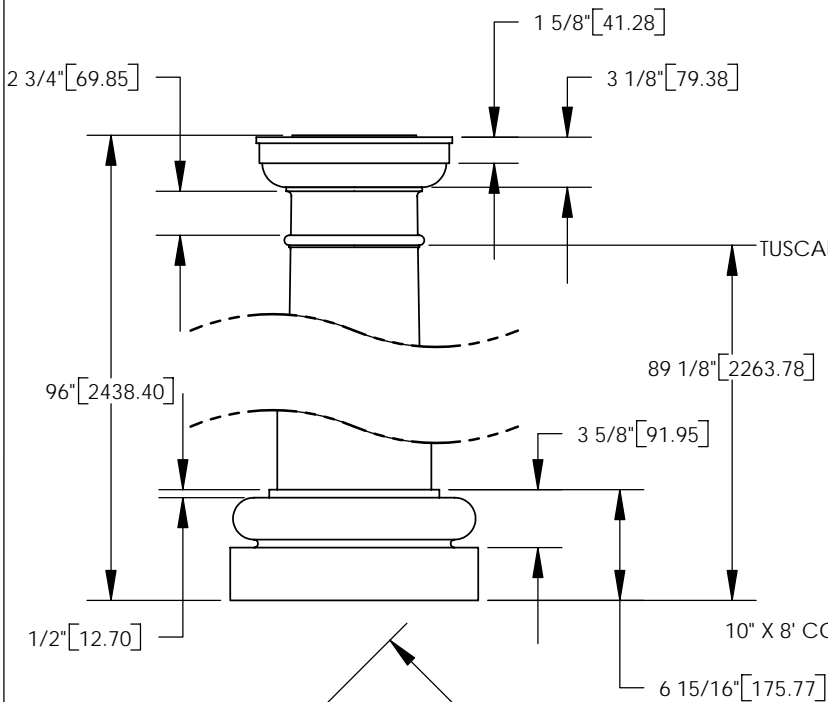
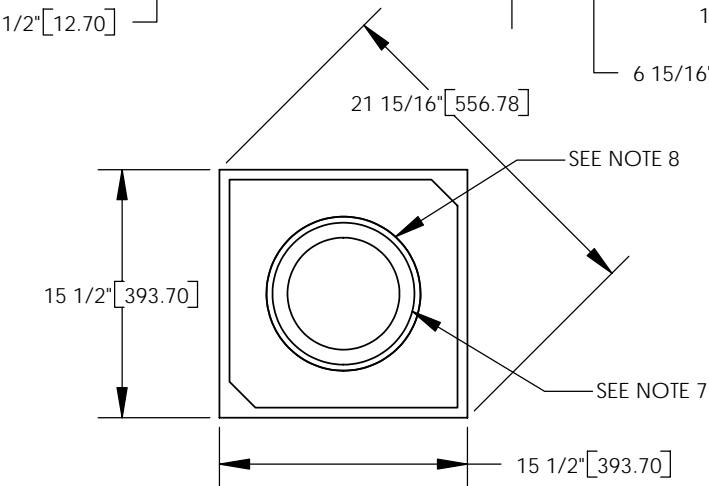


TUSCAN CAP



ARCHITECTURAL VIEW
SCALE 1/25



TUSCAN BASE

NOTES:

1. DIMENSIONS WITHIN THE PARENTHESES ARE METRIC UNITS (millimeters) or (Kg=Kilograms)
2. MATERIAL: FIBERGLASS REINFORCED POLYMER (FRP)
3. WEIGHT. COLUMN: 83 Lb. (37.6 Kg)
CAP: 8 Lb. (3.6 Kg)
BASE: 15 Lb. (6.8 Kg)
4. MATERIAL THICKNESS. COLUMN: 3/8" (9.5)
5. INSIDE DIAMETER AT TOP OF COLUMN: 7" (177.8)
6. OUTSIDE DIAMETER AT TOP OF COLUMN: 7 3/4" (196.9)
7. INSIDE DIAMETER AT BOTTOM OF COLUMN: 8 7/8" (225.4)
8. OUTSIDE DIAMETER AT BOTTOM OF COLUMN: 9 5/8" (244.5)
9. TAPER STARTS 33" (838.2) FROM BOTTOM OF COLUMN.

First Class BP, Inc.
1418 Fenwick Drive
Marietta, GA 30064
Tel: (888) 514-8141
Fax: (770) 514-0731
E-Mail: firstclassbp@mindspring.com

		DIMENSIONS ARE IN INCHES (mm)	
		TOLERANCES: FRACTIONAL ± 1/8" ANGULAR: MACH ± BEND ± TWO PLACE DECIMAL ± THREE PLACE DECIMAL ±	
		MATERIAL --	
NEXT ASSY	USED ON	FINISH --	
APPLICATION		DO NOT SCALE DRAWING	

	NAME	DATE
DRAWN	SOF	
CHECKED		
ENG APPR.		
MFG APPR.		
Q.A.		
COMMENTS:		

© COPYRIGHT
First Class Building Products Inc. 2005

10" X 8' TUSCAN COLUMN
ASSEMBLY

SIZE	DWG. NO.	REV.
A		01
SCALE: 1/12	WEIGHT:	SHEET 1 OF 1